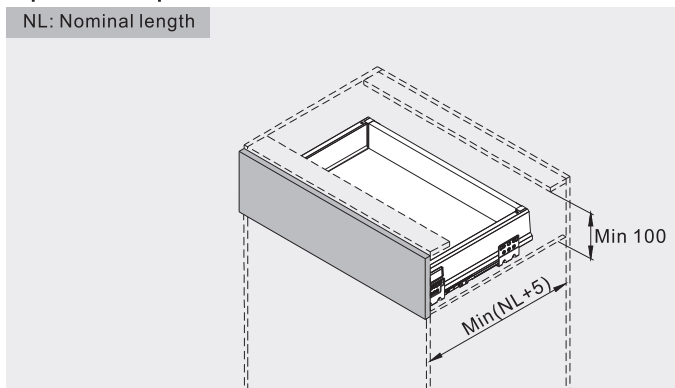


Space required

NL: Nominal length

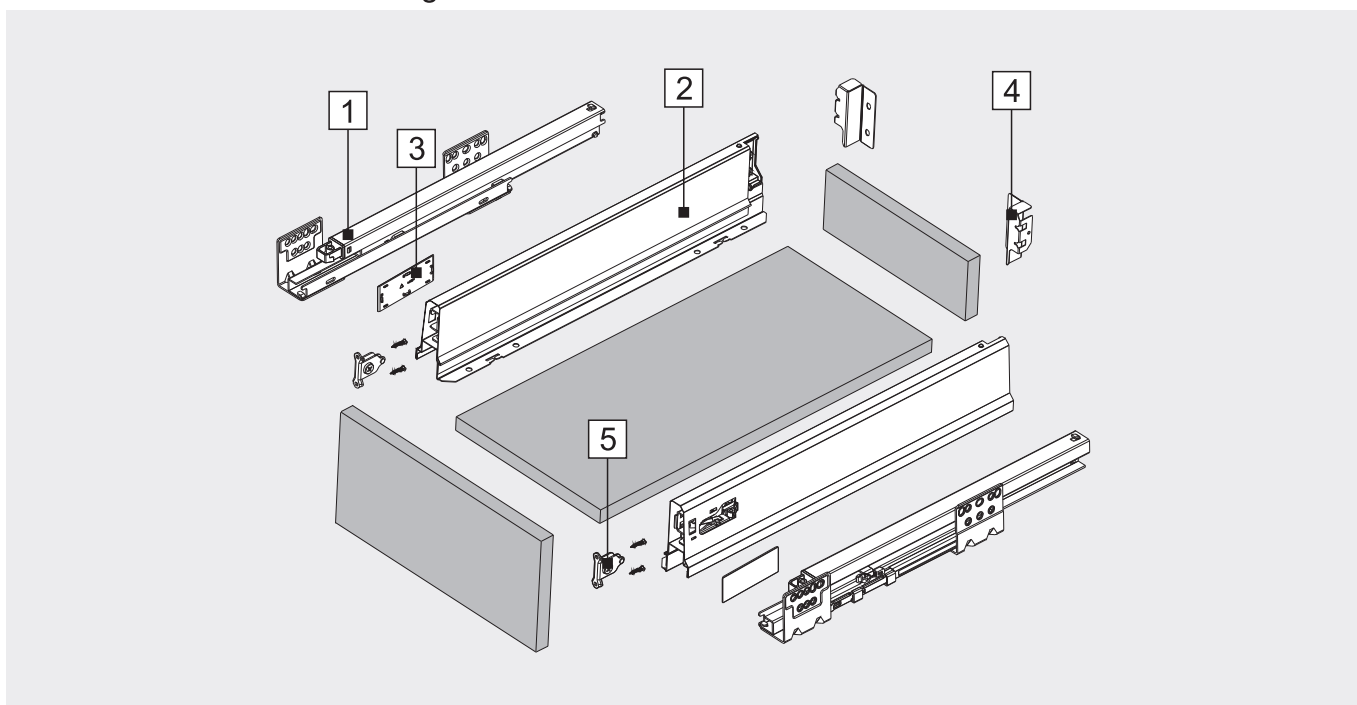


Order information

H80mm Deluxe Unibox		
Nominal length	Front fixing bracket Left/Right	The complete set basic components includes
	Metal	
270 mm	DBD1.270A.(*)	1. Concealed runners Left/Right
300 mm	DBD1.300A.(*)	2. Drawer side Left/Right
350 mm	DBD1.350A.(*)	3. Plastic covers 1*2pcs
400 mm	DBD1.400A.(*)	4. Back panel adapters Left/Right
450 mm	DBD1.450A.(*)	5. Front fixing brackets 1*2pcs
500 mm	DBD1.500A.(*)	
550 mm	DBD1.550A.(*)	

Remarks:
(*): Color: White (WT) / Dark grey (DG)

Product breakdown drawing

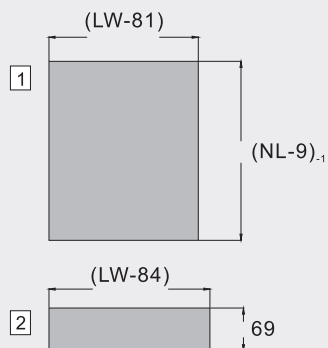
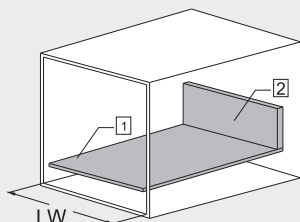


Cutting size

Bottom and back panel measurement 16mm density panel

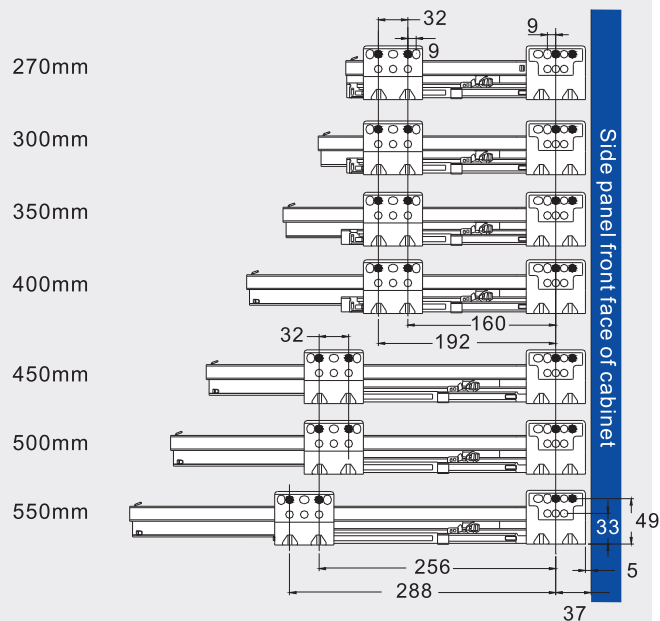
NL: Nominal length

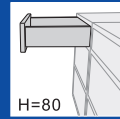
LW: Inner Cabinet Width



Runner Installation

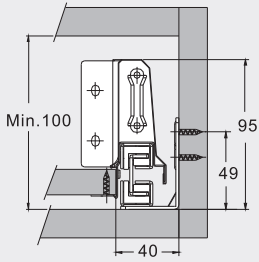
Nominal length



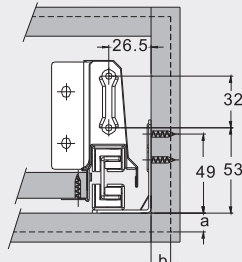


H=80mm installation instruction

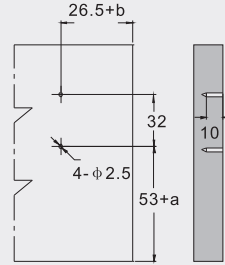
Inside cabinet dimension



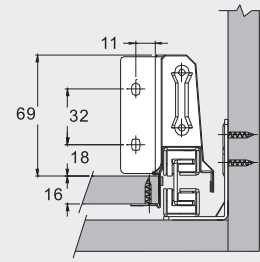
Front panel mounting positions



Front fixing brackets positions

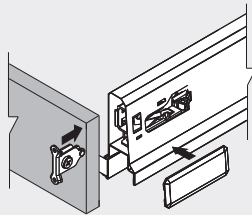
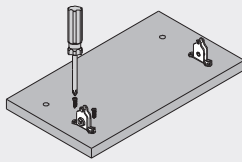


Back panel mounting positions

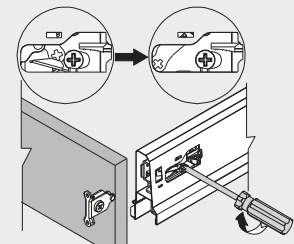
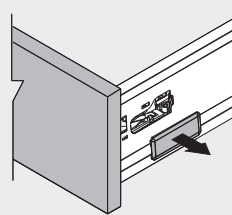


Drawer installation instruction

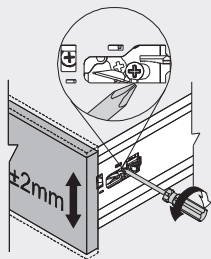
Front panel installation



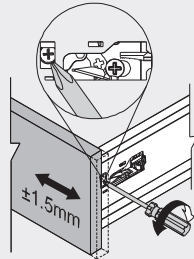
Front panel disassembly



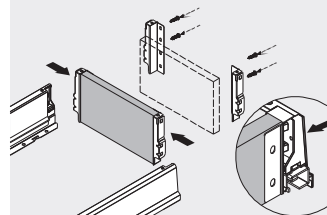
Front panel height adjustment: ±2mm



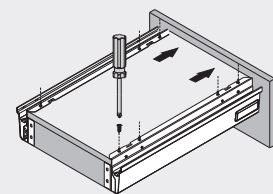
Front panel side adjustment: Left 1.5mm/Right 1.5mm



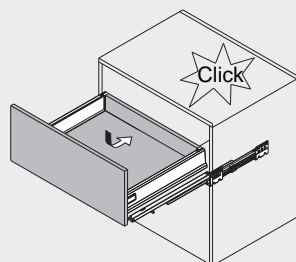
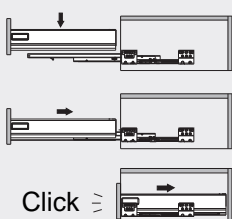
Back panel mounting



Bottom panel mounting



Drawer mounting



Drawer box disassembly

